



2009 Race Packet

Race Route Distance 54 miles

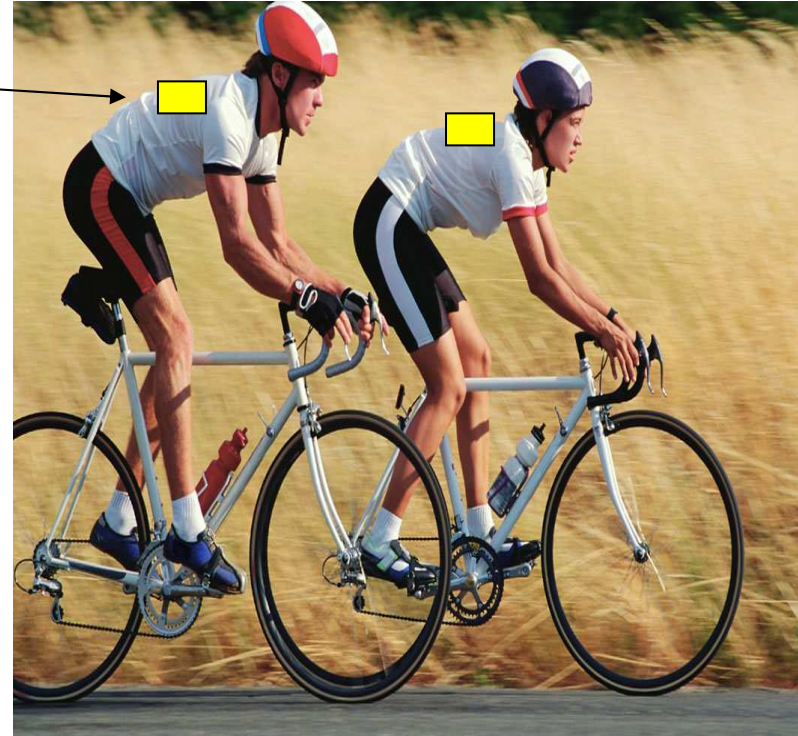
Race Details / Rules

- Race will start at **8:30 a.m.** Begin lining up around **8:15 a.m.**
- The race will begin as a neutral start from Jones Park in Fort Atkinson. Once safely outside of city limits, racing will begin. A lead car will escort the race with a sag wagon following from behind.
- The race circuit will consist of **three laps** from **SH 106 going west to Busseyville, North to County Road C and then proceeding clockwise on the route, the first two laps will proceed South on County Road J; the third lap will go past County J to Kunz Road. The race is completed upon crossing the finish line at the top of Kunz Rd.**
- The race will be professionally timed. **CHIPS WILL PLACED ON BIB NUMBERS; BIB NUMBERS MUST BE PLACED ON YOUR BACK.**
- Don't sit-up at the finish line. This makes it difficult for officials to read the rider number. Remember, riders behind you might be sprinting for a high placing in their category.
- Helmets are required.
- No aero-bars.
- No support vehicles for spare wheels, etc.
- Feed zone will be on the north side of Bussey Rd. across from Busseyville Park.

- Finish line is outside of town (at the top of Kunz Rd.) The sprint finish is outside of the city limits for safety reasons. The 3 mile ride back into town can be used for cooling down. **The southern end of Kunz Road between the finish line and Hwy 106 going back to Jones Park has gravel from a recent resurfacing. PLEASE TAKE YOUR TIME ON THE RETURN TRIP TO THE PARK, BEING CAUTIOUS OF THE GRAVEL.**
- Trophies will be awarded to the top 3 overall men and top 3 overall women.
- **Yellow line rule will be enforced.** On back roads, don't take up the entire road. This can be a dangerous practice that can put the entire pack at risk. **Riders will be disqualified or ticketed for not following this rule.**
- Jefferson County authorities will help with controlling traffic and road crossings, however, cyclists must ride as if no traffic support is being provided in the event a car ignores traffic control.
- This is not a closed course or the Tour de France. Winners receive trophies, ribbons and bragging rights. **Don't take unnecessary risks.**

Race Bib Placement

Place numbers flat on the back



To insure accurate finish line results, read the following on bib placement:

- **Please place number flat on the upper back, going side to side.**
- Do not use the holes, your number will just flop around. Pin the number through the jersey and back up through the number, two points of attachment rather than one.
- Place the number by pinning one corner, then pull on the number slightly and pin the next corner. This makes the jersey under the number slightly longer than the number. When the jersey stretches it will hold the number flat against the body. Repeat with the rest of the corners.
- Do not fold, crumple, cut, or otherwise modify the number. The sticker on the bib number has the chip in it.
- **Do not place the bib upside down.**
- Do no place the bib under a CamelBak water bag strap because numbers will get obscured. Put the strap under the bib. Put the CamelBak on, then the bib.

